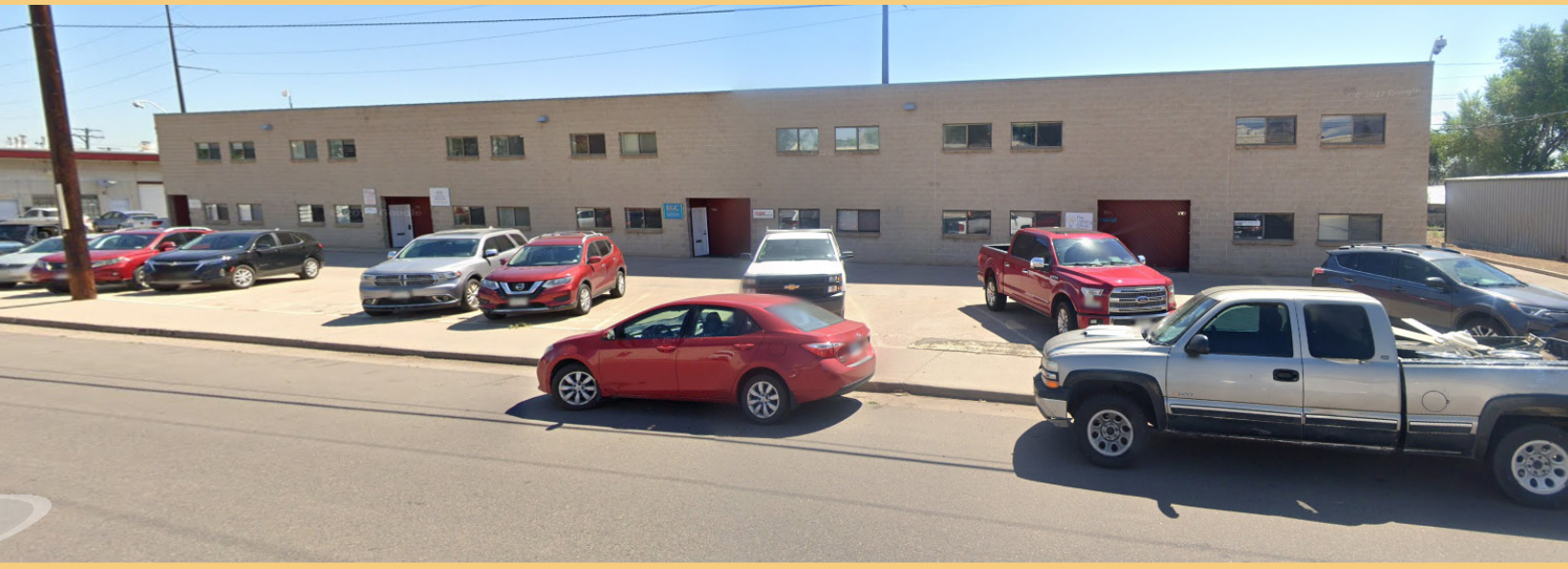


FLEX INDUSTRIAL FOR LEASE

1150 S Lipan St. | Denver, CO 80223



LEASE RATE
\$13/SF NNN



EST NNN
\$5.00/SF



SPACE AVAIL.
3,400 SF

SUMMARY

1150 S Lipan is a 3,400 SF space for lease that consists of ~2,250 SF of warehouse and ~1,150 SF of office. The building has 18 foot clear height ceilings in the warehouse and a 12 foot drive in door. 3-phase power and separately measured utilities.

HIGHLIGHTS

- Great access to I-25 and other major roads in the area
- Great clear height (18')
- Ready for move in June 2025
- Owners built the building and have kept it in fantastic shape
- Great office to warehouse split

NORTHPEAK TEAM

DREW WILLIAMS

Advisor

(303) 917-5232

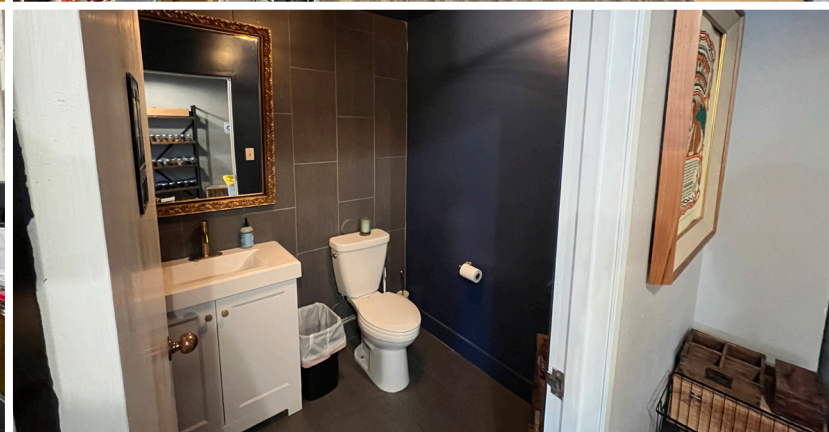
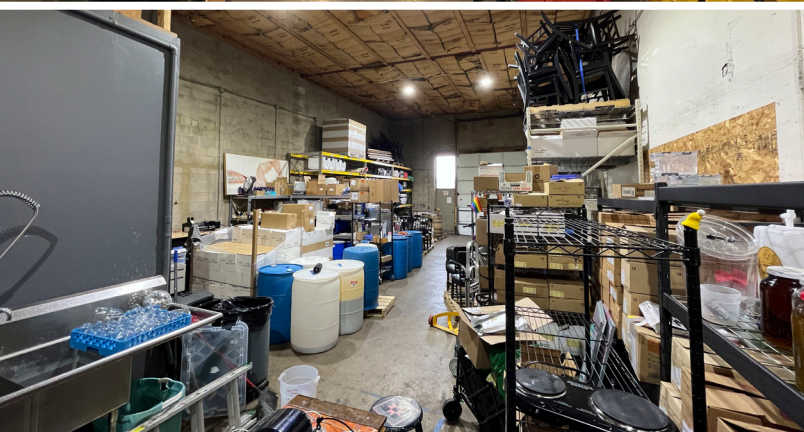
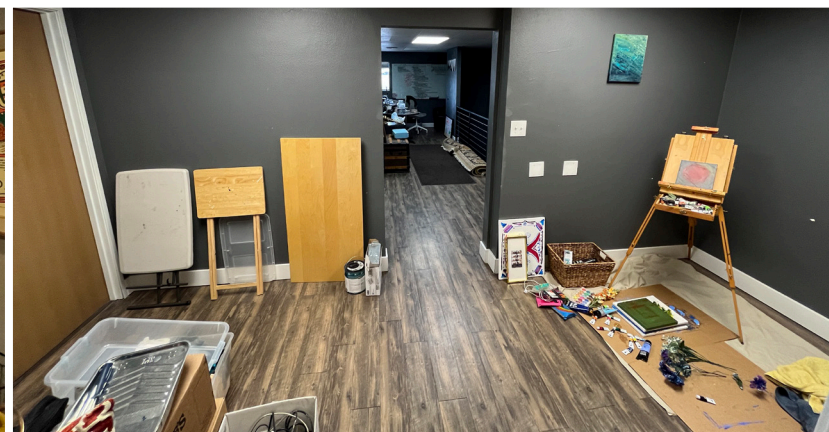
Drew@NorthPeakCRE.com



NORTHPEAK[®]
COMMERCIAL ADVISORS

FLEX INDUSTRIAL FOR LEASE

1150 S Lipan St. | Denver, CO 80223



NORTHPEAK TEAM

DREW WILLIAMS

Advisor

(303) 917-5232

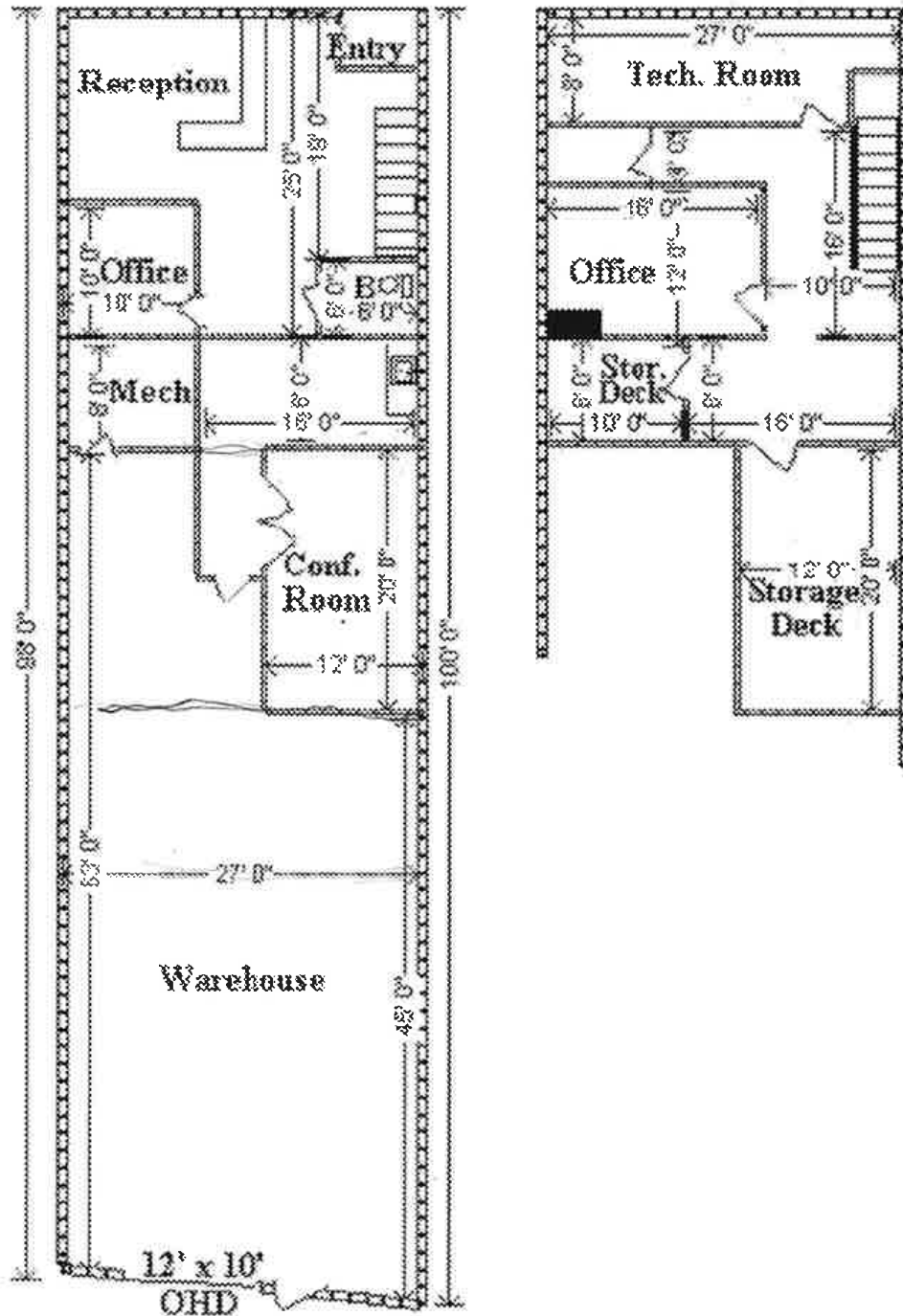
Drew@NorthPeakCRE.com



NORTHPEAK[®]
COMMERCIAL ADVISORS

FLEX INDUSTRIAL FOR LEASE

1150 S Lipan St. | Denver, CO 80223



NORTHPEAK TEAM

DREW WILLIAMS

Advisor

(303) 917-5232

Drew@NorthPeakCRE.com

FLEX INDUSTRIAL FOR LEASE

1150 S Lipan St. | Denver, CO 80223



DEMOGRAPHICS	1 MILE	3 MILES	TRAFFIC			
			COLLECTION STREET	CROSS STREET	TRAFFIC	DISTANCE
Population	14,585	187,015	W Mississippi Ave.	S Fox St. W	23,002	0.39 mi
Households	5,370	81,126	W Florida Ave.	S Lipan St.	11,831	0.42 mi
Median Age	34.90	35.60	W Florida Ave.	S Platte River Dr.	10,000	0.42 mi
Median HH Income	\$73,399	\$71,176	S Platte River Dr.	S Jason St.	9,400	0.38 mi

NORTHPEAK TEAM

DREW WILLIAMS

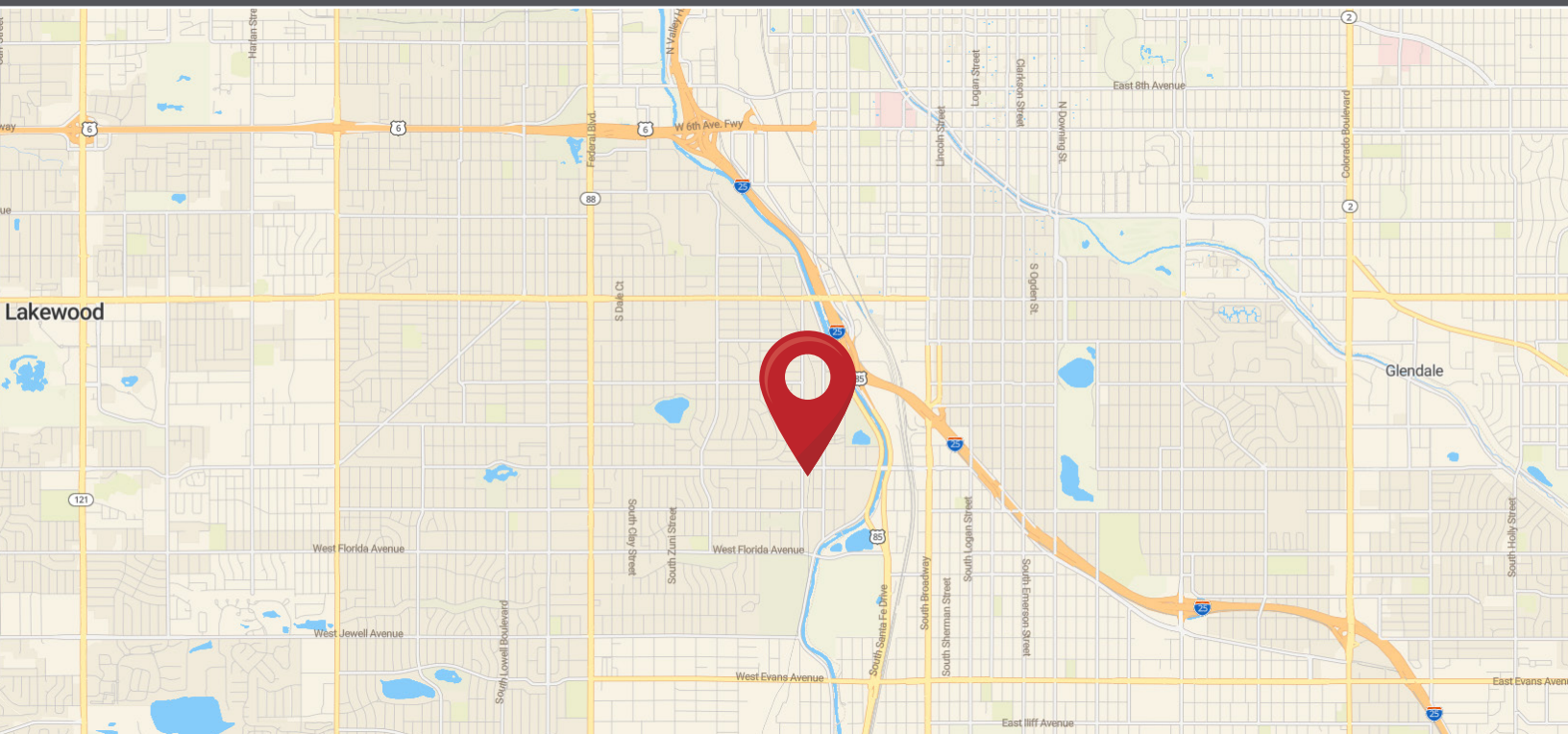
Advisor

(303) 917-5232

Drew@NorthPeakCRE.com

FLEX INDUSTRIAL FOR LEASE

1150 S Lipan St. | Denver, CO 80223



NORTHPEAK TEAM

DREW WILLIAMS

Advisor

(303) 917-5232

Drew@NorthPeakCRE.com